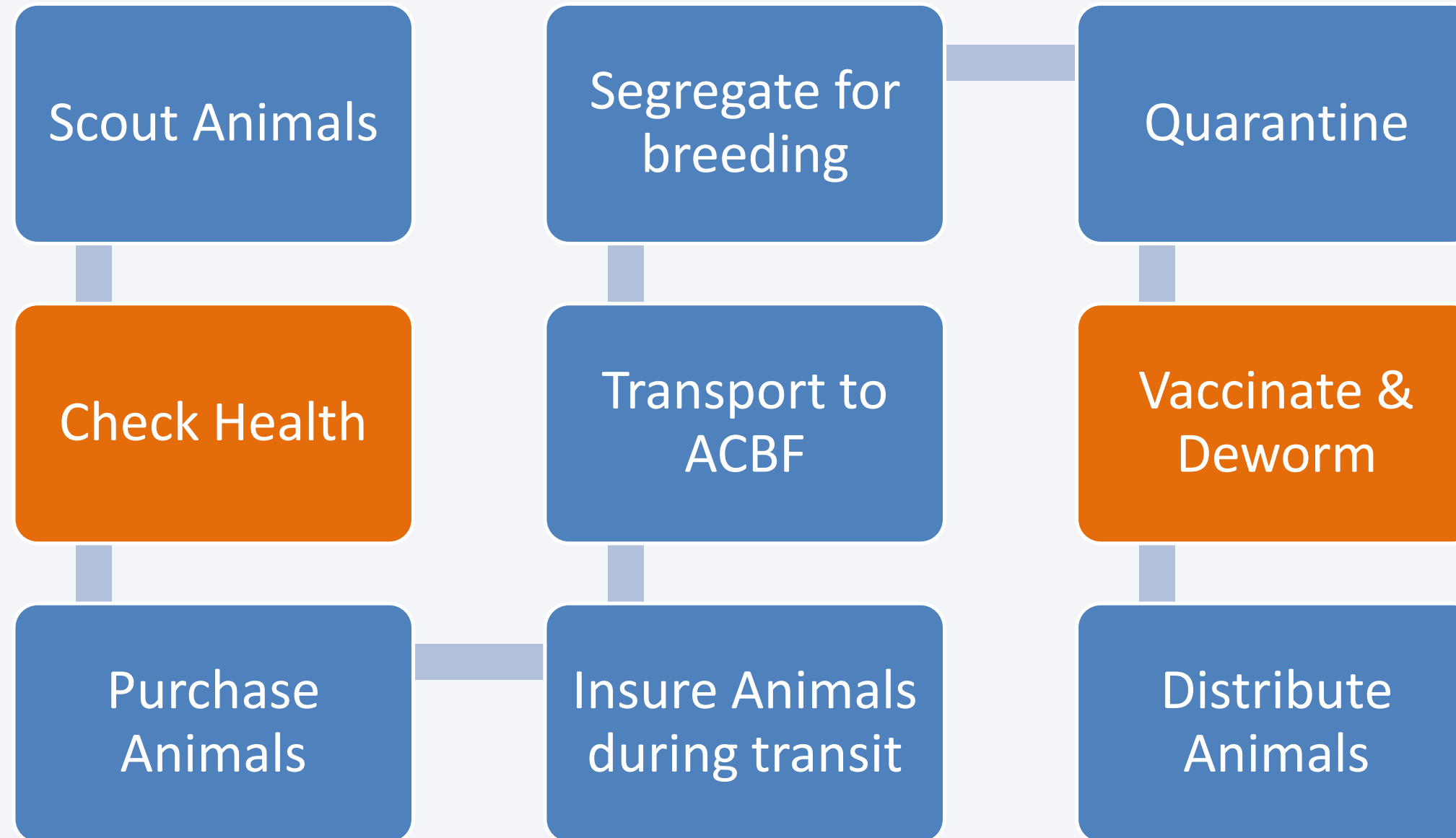
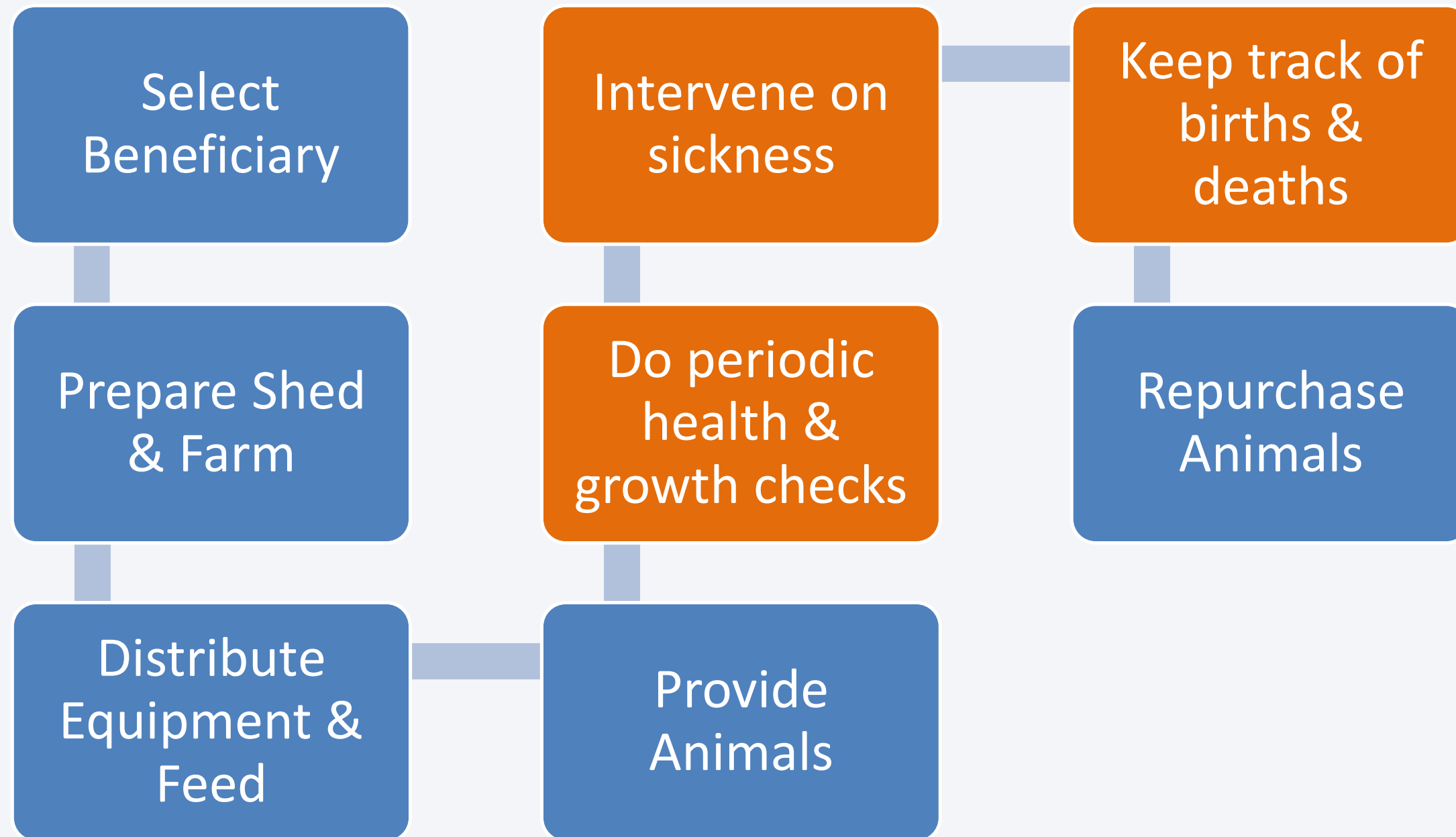


# Procurement of Animals

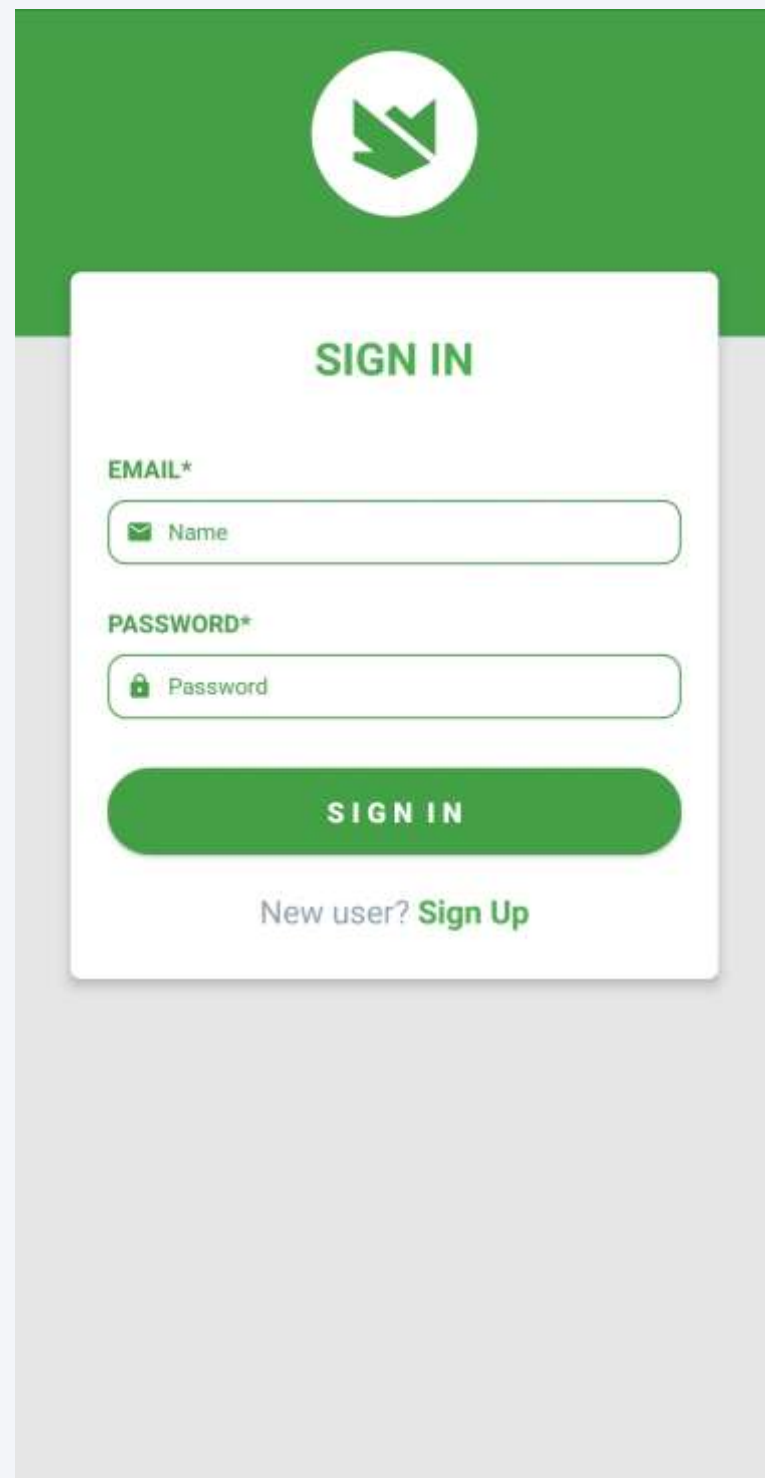


# Distribute to Beneficiaries



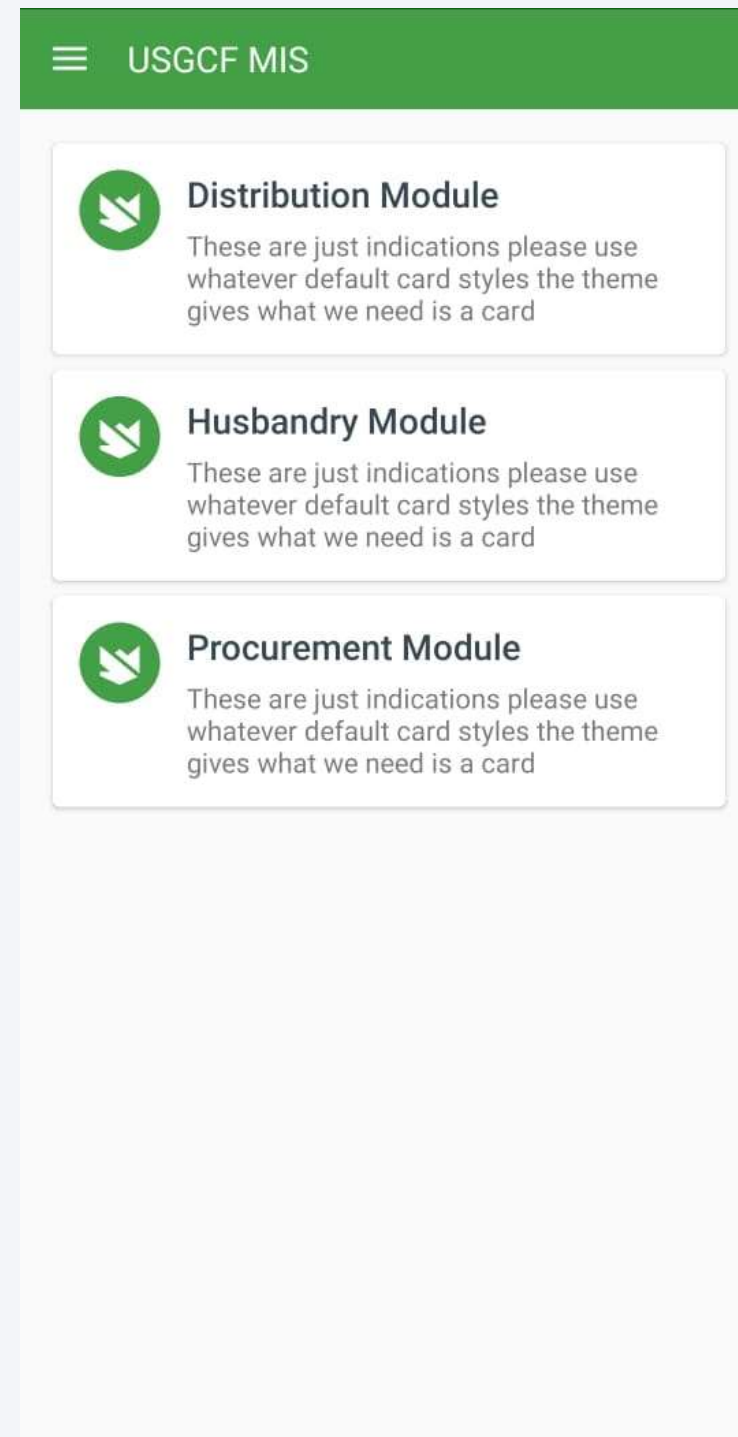


# About the Software



A sign-in form with a green header containing a logo. The form has a white background and includes the following elements:

- SIGN IN** (green text)
- EMAIL\*** label above a text input field with a placeholder "Name".
- PASSWORD\*** label above a password input field with a placeholder "Password".
- A green **SIGN IN** button.
- A link: "New user? [Sign Up](#)".



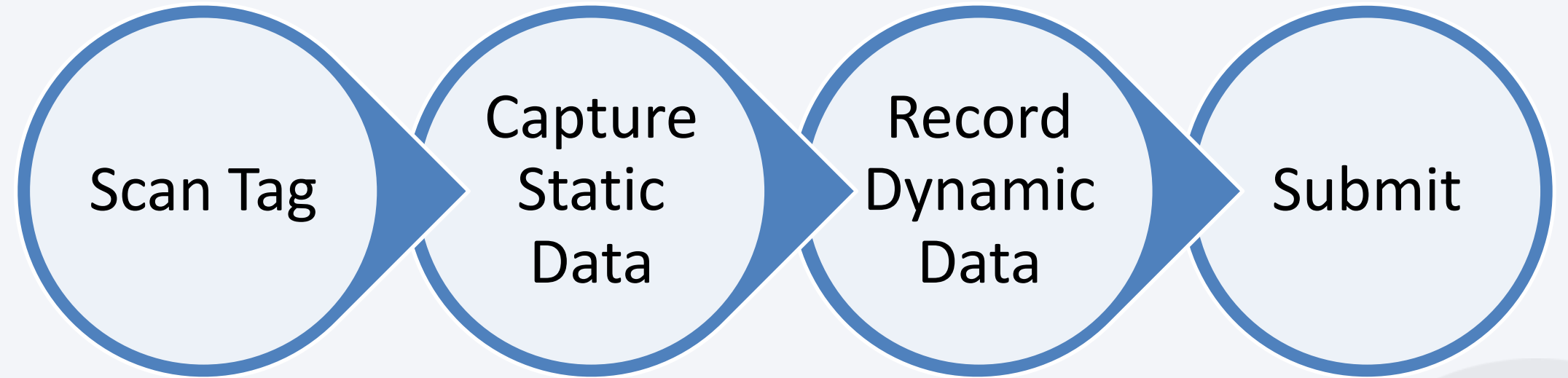
A dashboard titled "USGCF MIS" with a green header. It features three white cards, each with a green icon and a title:

- Distribution Module**: These are just indications please use whatever default card styles the theme gives what we need is a card
- Husbandry Module**: These are just indications please use whatever default card styles the theme gives what we need is a card
- Procurement Module**: These are just indications please use whatever default card styles the theme gives what we need is a card

- The solution will be primarily internet driven.
- Office based employees of the federation would be able to access the solution on the web
- Employees in the field would be able to use a mobile app.
- The mobile app would be primarily for managing the:
  - Procurement of Animals
  - Delivery of Animals to the Beneficiary
  - Recording of data from periodic farm visits

# About the Software

The screenshot displays the software interface. On the left is a sidebar menu with three items: 'Shed Preparation', 'Create Animal Request', and 'Deliver Animals'. The main content area is titled 'Shed Preparation' and shows three identical record cards for 'Kamal Singh'. Each card includes the name, phone number (9856596585), status (Pending), location (Chamoli Village Rudraprayag), and date (14/06/2020), along with an 'UPDATE STATUS' button.



- Start Mobile App
- Go to appropriate screen
- Scan Tag using reader

- Tag reader sends tag number to App
- App gets Animal details like Species, Breed, Age etc. based on tag number

- Weight
- Health
- Photo
- Other Info

- Using internet
- Send Data
- Send Location